

CUP Sealed Blind Rivets—Waterproof

Product Description/ Specification

The new innovative CUP blind rivets are manufactured from the combination of Stainless steel 316 as the shell and duplex Stainless steel 318L as Mandrel and also incorporates a neoprene washer on the shell. SS 316 provides high corrosion resistance, SS 318L is a high strength material which helps in the deformation of the rivet shell on the drill hole ensuring a perfect seal and the HNBR washer results in a watertight seal which has been tested under a 1m water column. **(100% waterproof)**

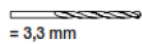
High corrosion resistance and a waterproof seal makes these rivets ideal for all offshore applications.

For more information on these rivets contact info@bsstainless.com

Dimensions:

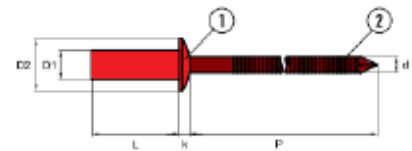
ø 3,2 mm

D1 = 3,2 + 0,08 / - 0,10 mm
 D2 = 6,0 + / - 0,24 mm
 k = 0,9 + / - 0,3 mm
 d = 1,9 mm
 P = ≥ 27,0 mm
 L = + 1,0 / - 0,2 mm



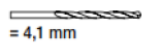
= 3,3 mm

D1	Shell	CODE	2000 N	2500 N	Quantity
3,2 x 6,0 mm	0,5 - 1,5 mm	21501 32600			1000
3,2 x 8,0 mm	1,5 - 3,0 mm	21501 32800			1000
3,2 x 9,5 mm	3,0 - 5,0 mm	21501 32950			1000
3,2 x 10,0 mm	3,5 - 5,5 mm	21501 32100			1000
3,2 x 12,0 mm	5,0 - 7,0 mm	21501 32120			1000



ø 4,0 mm

D1 = 4,0 + 0,08 / - 0,10 mm
 D2 = 8,0 + / - 0,29 mm
 k = 1,3 + / - 0,3 mm
 d = 2,3 mm
 P = ≥ 27,0 mm
 L = + 1,0 / - 0,2 mm

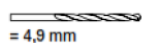


= 4,1 mm

D1	Shell	CODE	3000 N	4000 N	Quantity
4,0 x 6,0 mm	0,5 - 1,5 mm	21501 40600			500
4,0 x 8,0 mm	1,5 - 3,0 mm	21501 40800			500
4,0 x 9,5 mm	3,0 - 5,0 mm	21501 40950			500
4,0 x 10,0 mm	3,5 - 5,5 mm	21501 40100			500
4,0 x 12,0 mm	5,0 - 6,5 mm	21501 40120			500
4,0 x 16,0 mm	6,5 - 10,5 mm	21501 40160			500

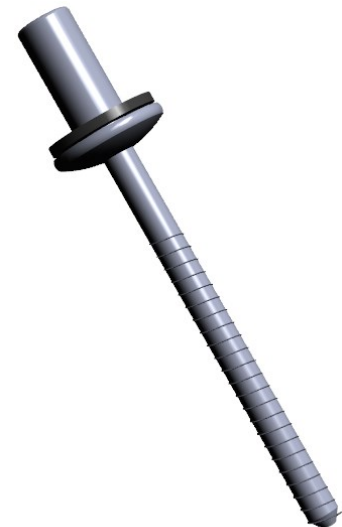
ø 4,8 mm

D1 = 4,8 + 0,08 / - 0,10 mm
 D2 = 9,5 + / - 0,29 mm
 k = 1,6 + / - 0,3 mm
 d = 2,9 mm
 P = ≥ 27,0 mm
 L = + 1,0 / - 0,2 mm



= 4,9 mm

D1	Shell	CODE	4500 N	5500 N	Quantity
4,8 x 8,0 mm	1,0 - 3,0 mm	21501 48800			250
4,8 x 9,5 mm	3,0 - 5,0 mm	21501 48950			250
4,8 x 10,0 mm	3,5 - 5,5 mm	21501 48100			250
4,8 x 12,0 mm	5,0 - 6,5 mm	21501 48120			250
4,8 x 12,5 mm	5,5 - 7,0 mm	21501 48125			250
4,8 x 16,0 mm	6,5 - 10,5 mm	21501 48160			250
4,8 x 20,0 mm	10,5 - 14,0 mm	21501 48200			250



2731 ISO 9001: 2008



BS Stainless Limited—360 Leach Place, Walton Summit, Preston, PR5 8AS T: +44 (0) 1772 337555 F: +44 (0) 1772 313010 E: info@bsstainless.com

www.bsstainless.com