

## Drymet Band Eco Seal

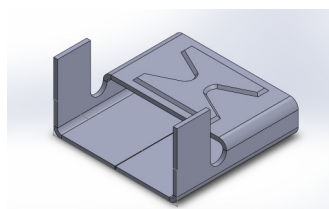
### Product Description/ Specification

Stainless Steel wing seals are produced to an innovative design which allows a reduction in metal thickness to improve ease of installation yet deliver improved performance and better strength the Drymet version includes an innovative backing with a Surlyn based moisture barrier. This was designed to prevent direct contact of the wing seal with metal jacketing to minimise galvanic corrosion. These wingseals are mainly manufactured in 304 and 316 grades of stainless steel to following specifications:

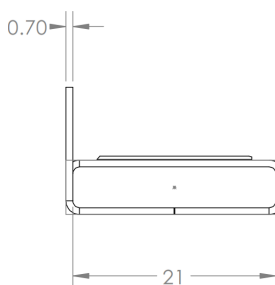
Austenitic Stainless Steel ASTM A240/ ASTM A167/ EN 10088-4

#### Design:

BS Eco seals are pressed from a stainless steel coil

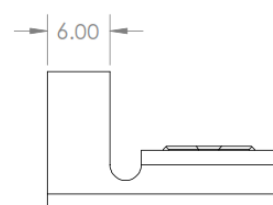


Standard sizes  
1/2" (13mm)  
3/4" (19mm)



0.7 mm thick.

are  
and



TENSILE LOAD DATA	Width (mm)	Thickness (mm)	Maximum Load (N)	Tensile stress at Maximum Load (MPa)	UYS or Proof Strength at YPE/ Ae (Automatic) (MPa)
<b>Eco Seals</b>	19	0.7	1411	96.15	70.5
	19	0.7	1419.12	98.72	90.8
<b>Conventional Wing seals</b>	19	0.8	1167.79	81.24	57.47
	19	0.8	1193.2	83.01	69.32

Other sizes potentially available: 5/8" (16mm), 1" (25mm), 1 1/2" (40mm) and 2" (50mm)

\* Wing Seals also available in 0.8mm thick material if requested\*

#### Mechanical Properties:

#### Safety:

There are no known health risks in handling stainless steel, although it is recommended that gloves should be worn in case of sharp edges. Good lifting practice techniques should always be followed when handling these products.



#### Packaging:

Seals are packed in either boxes of 1000 or sacks of 5000, although these can be adapted for special requirements. Material will be packed on wooden pallets approxi-

