

WingSeal

Product Description/ Specification

Wingseals are used to secure the metal banding around the cladding or insulation materials after applying appropriate tension in the bands. These are manufactured from stainless steel 304 or 316 and hard temper. The material is produced to the following specifications:-

Austenitic Stainless Steel ASTM A240 / ASTM A167 / EN10088-4

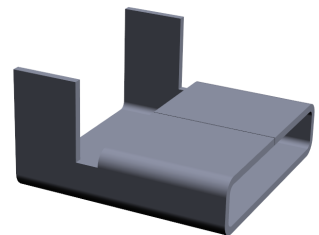
For further data on the Mechanical and physical properties of the stainless used see Product Data Sheet for stainless steel Banding (available from www.bsstainless.com)

Design:

Standard seals are pressed from stainless steel coil in either 0.5mm or 0.8mm thickness, based on the customer's requirements. Most common widths are ½" (13mm) and ¾" (19mm)

Other sizes available: 5/8" (16mm), 1" (25mm), 1 1/2" (40mm) and 2" (50mm)

* Wing Seals also available in 0.7mm thick material if requested*



Safety:

There are no known health risks in handling stainless steel, although it is recommended that gloves should be worn in case of sharp edges. Good lifting practice techniques should always be followed when handling these products.

Packaging:

Seals are packed in either boxes of 1000 or sacks of 5000, although these can be adapted for special requirements. Material will be packed on wooden pallets approximately 1000mm X 1200mm and shrink wrapped. Heat treated pallets will be supplied if requested.

