

# Stainless Steel Toggles

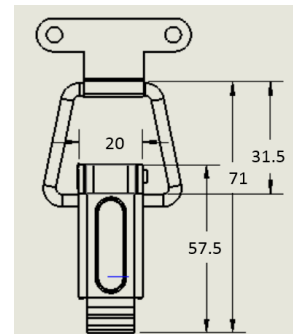
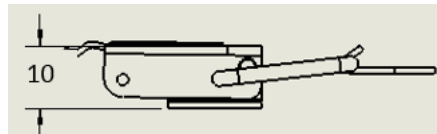
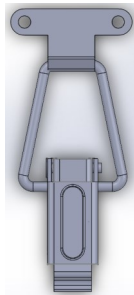
## Product Description/ Specification

Stainless Steel Toggles are produced in 304 as standard but can also be produced in 316 if requested. We are capable of producing a wide range of designs and sizes of toggles to suit specific application. All toggles are manufactured from stainless steel produced to following specification:

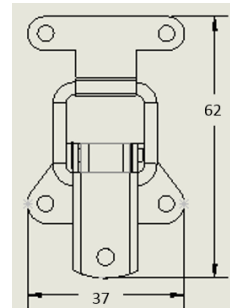
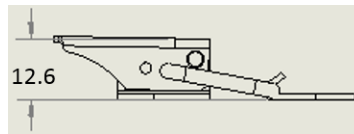
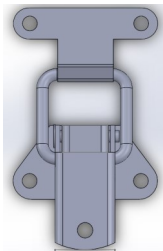
Austenitic Stainless Steel ASTM A240 / ASTM A167 / EN 10088-2

The standard designs of toggles are listed below:

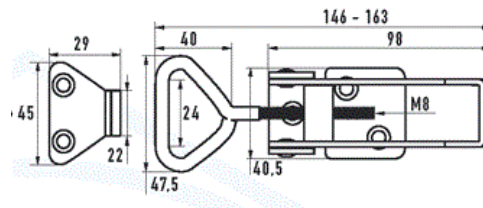
### Model B1:



### Model B2:



### Model 703:



### Safety:

There are no known health risks in handling the toggles, although it is recommended that safety gloves should be worn in case of sharp edges. Good lifting practice technique must always be followed when handling boxed products.

### Weights:

Toggles are normally boxed in quantities of 100 unless specified otherwise by the customer. Material will be packed on wooden pallets approximately 1000mm X 1200mm and shrink wrapped. Heat treated pallets will be supplied where requested.

