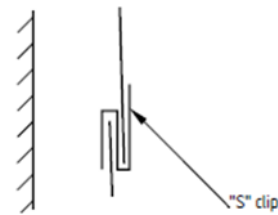
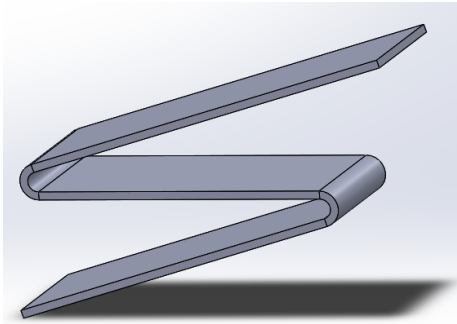


## Stainless Steel S-Clips

### Product Description/ Specification

S-clips are used between two vertical pieces of cladding. These are typically formed by bending a stainless steel strip into three successive 3" long sections to form a 'S' shape which interfaces between two neighbouring pieces of vertical cladding to hold them in place, one on top of the other. The clips are equally spaced around the circumference of the pipe or tank. The number of clips increases with the diameter, but the number of s-clips to be used will be specified by the contractor.

The S-clips are manufactured from 19/20mm wide stainless steel 304 or 316 strips with material thickness varying from 0.5-0.6 mm.



ASTM	Tensile (MPa)	Yield (MPa)	Elongation (min %)	Hardness (max. Brinell)
304 (1.4301)	515	205	40	201

### Quality:

We are committed to offering quality product with service which is second to none. We operate on ISO 9001 management system and all our materials are produced to meet relevant ASTM /BS EN /DIN standards.

Further information on mechanical and chemical properties of stainless steel used can be supplied on request.

### Safety:

There are no known health risks in handling stainless steel, although it is recommended that gloves should be worn in case of sharp edges. Good lifting practice techniques should always be followed when handling these products.

